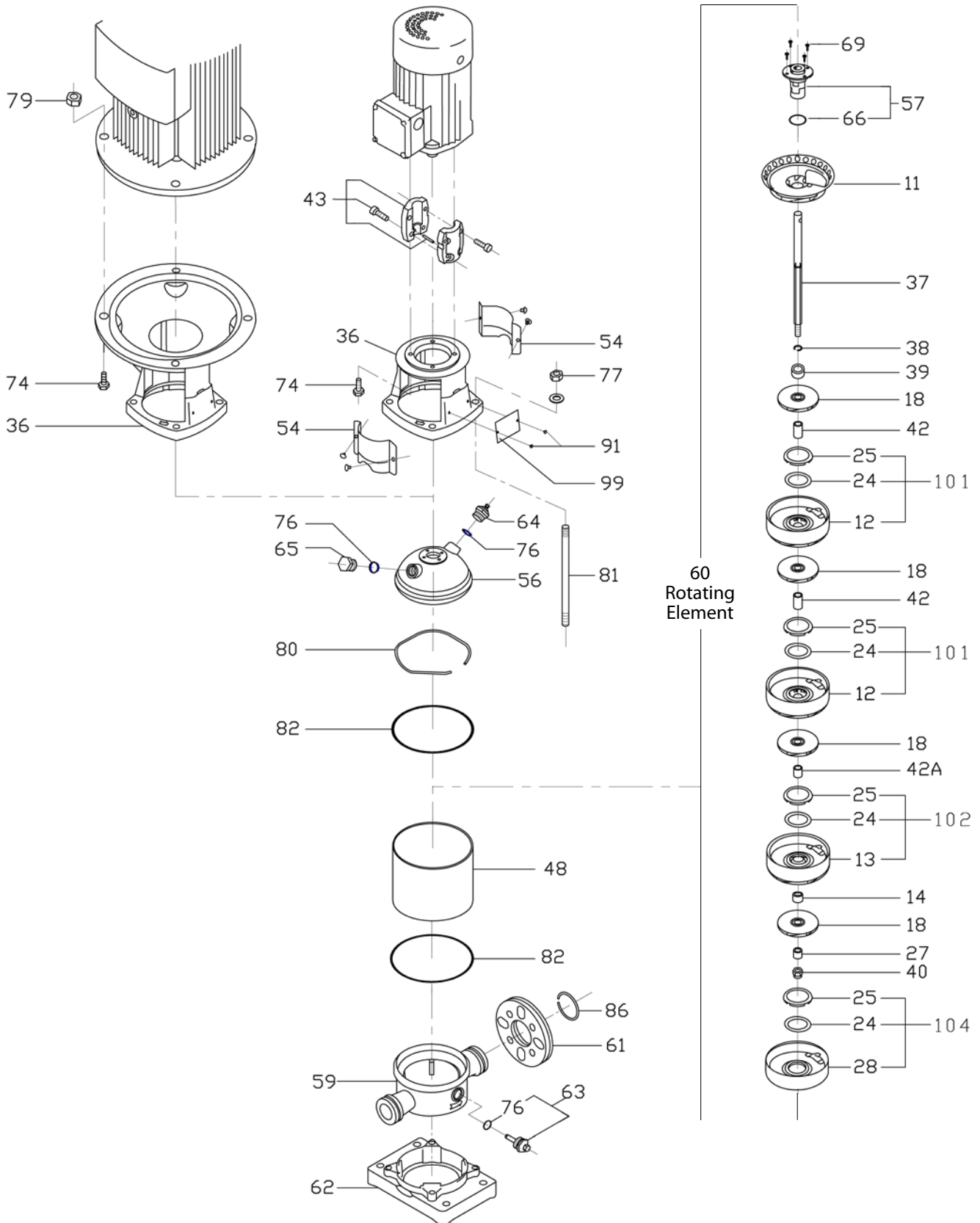




CENTRIFUGAL PUMPS

SBI(N)-5



**CENTRIFUGAL PUMPS****SBI(N)-5**

ILLUS. NO.	NO. PER UNIT	SBI PART NO.	SBN PART NO.	DESCRIPTION
11	1	SBI0541100	SBN0561100	Outlet Diffuser
12	as reqd.	SBI0541200	SBN0561200	Diffuser
13	as reqd.	SBI0541300	SBN0561300	Diffuser with Bearing
14	as reqd.	SBI0191400		Middle bearing
18	as reqd.	SBI0541800	SBN0561800	Impeller
24	as reqd.	SBI0592400		Neck ring
25	as reqd.	SBI0542500	SBN0562500	Neck ring retainer
27	1	SBI0192700	SBN0162700	Clamp Bush
28	1	SBI0542800	SBN0562800	Inlet Casing
36	1	SBI0163600A0		Motor Stool (0.37-0.55kW)
		SBI0163600B0		Motor Stool (0.75-1.1kW)
		SBI0163600C0		Motor Stool (1.5-2.2kW)
		SBI0163600D0		Motor Stool (3-4kW)
		SBI0563600		Motor Stool (5.5kW)
37	1	SEE SHAFT SELECTION CHART		Pump Shaft
38	1	SBI0163800		Shaft Ring
39	1	SBI0593900	SBN0563900	Shaft Bushing
40	1	(304SS)	(316SS)	Lock Nut (M8)
42	1	SBI0544200	SBN0564200	Spacing Bush (17.5mm)
42A	1	SBI0544200A0	SBN0564200A0	Spacing Bush (4.5mm)
43	1	SBI0194300A0		Coupling Assembly (0.37-0.55kW)
		SBI0194300B0		Coupling Assembly (0.75-1.1kW)
		SBI0194300C0		Coupling Assembly (1.5-2.2kW)
		SBI0194300D0		Coupling Assembly (3-4kW)
		SBI0594300		Coupling Assembly (5.5kW)
48	1	SEE PUMP CASING SELECTION CHART		Pump Casing
54	2	SBI0145400A0		Coupling Guard (0.37-1.1kW)
		SBI0145400B0		Coupling Guard (1.5-5.5kW)
56	1	SBI0145600	SBN0165600	Pump Top Cap
57	1	SBI0195700	SBN0165700	Mechanical Shaft Seal
59	1	SBI0145900A0	SBN0165900A0	Pump Base
60	1	SEE ROTATING ELEMENT SELECTION CHART		Rotating Element
61	1	SBI0166100		Suction/Discharge Flange
62	1	SBI0166200A0		Base Plate
63	1	SBI0146300	SBN0166300	Drain Plug
64	1	SBI0196400	SBN166400	Air Vent Screw & O-ring
65	1	SBI0196500		Plug
66	1	SBI01066E		O-ring (EPDM)
		SBI01066V		O-ring (Viton)
69	4			Hexagon Socket Head Screw (M5)
74	4			Screw - M6*20L (0.37-0.55kW)
				Screw - M6*25L (0.75-1.1kW)
				Screw - M8*25L (1.5-2.2kW)
				Screw - M8*25L (3-4kW)
				Screw - M16*45L (5.5kW)
76	3	SBI01076E		O-ring (EPDM)
		SBI01076V		O-ring (Viton)
77	4			Nut & Washer (M12)



**CENTRIFUGAL PUMPS**

**SBI(N)-5**

ILLUS. NO.	NO. PER UNIT	SBI PART NO.	SBN PART NO.	DESCRIPTION
79	4			Nut (M12)
80	1	SBI0198000	SBN0168000	Locating Ring
81	4	SEE STAYBOLT SELECTION CHART		Staybolt
82	2	SBI0198200E		O-ring (EPDM)
		SBI0168200V		O-ring (Viton)
86	2	SBI0148600		Retaining Ring
101	as reqd.	SBI05-K1	SBN05-K1	Middle Diffuser Kit
102	as reqd.	SBI05-K2	SBN05-K2	Middle Diffuser with Bearing Kit
104	1	SBI05-K4	SBN05-K4	Inlet Casing Kit

**SHAFT SELECTION CHART**

MODEL	SBI PART NO.	SBN PART NO.
SBI5-02	SBI059370002	SBN056370002
SBI5-03	SBI059370003	SBN056370003
SBI5-04	SBI059370004	SBN056370004
SBI5-05	SBI059370005	SBN056370005
SBI5-06	SBI059370006	SBN056370006
SBI5-07	SBI059370007	SBN056370007
SBI5-08	SBI059370008	SBN056370008
SBI5-09	SBI059370009	SBN056370009
SBI5-10	SBI059370010	SBN056370010
SBI5-11	SBI059370011	SBN056370011
SBI5-12	SBI059370012	SBN056370012
SBI5-13	SBI059370013	SBN056370013
SBI5-14	SBI059370015	SBN056370014
SBI5-15	SBI059370017	SBN056370015
SBI5-16	SBI059370019	SBN056370016
SBI5-18	SBI059370021	SBN056370018
SBI5-20	SBI059370023	SBN056370020
SBI5-22	SBI059370025	SBN056370022
SBI5-24	SBI059370027	SBN056370024
SBI5-26	SBI059370029	SBN056370026
SBI5-29	SBI059370030	SBN056370029
SBI5-32	SBI059370033	SBN056370032
SBI5-36	SBI059370036	SBN056370036

**PUMP CASING SELECTION CHART**

MODEL	SBI PART NO.	SBN PART NO.
SBI5-02	SBI054480002	SBN056480002
SBI5-03	SBI054480003	SBN056480003
SBI5-04	SBI054480004	SBN056480004
SBI5-05	SBI054480005	SBN056480005
SBI5-06	SBI054480006	SBN056480006
SBI5-07	SBI054480007	SBN056480007
SBI5-08	SBI054480008	SBN056480008
SBI5-09	SBI054480009	SBN056480009
SBI5-10	SBI054480010	SBN056480010
SBI5-11	SBI054480011	SBN056480011
SBI5-12	SBI054480012	SBN056480012
SBI5-13	SBI054480013	SBN056480013
SBI5-14	SBI054480014	SBN056480014
SBI5-15	SBI054480015	SBN056480015
SBI5-16	SBI054480016	SBN056480016
SBI5-18	SBI054480018	SBN056480018
SBI5-20	SBI054480020	SBN056480020
SBI5-22	SBI054480022	SBN056480022
SBI5-24	SBI054480024	SBN056480024
SBI5-26	SBI054480026	SBN056480026
SBI5-29	SBI054480029	SBN056480029
SBI5-32	SBI054480032	SBN056480032
SBI5-36	SBI054480036	SBN056480036



**CENTRIFUGAL PUMPS**

**SBI(N)-5**

**ROTATING ELEMENT SELECTION CHART**

MODEL	SBI PART NO.	SBN PART NO.
SBI5-02	SBI5-02R	SBN5-02R
SBI5-03	SBI5-03R	SBN5-03R
SBI5-04	SBI5-04R	SBN5-04R
SBI5-05	SBI5-05R	SBN5-05R
SBI5-06	SBI5-06R	SBN5-06R
SBI5-07	SBI5-07R	SBN5-07R
SBI5-08	SBI5-08R	SBN5-08R
SBI5-09	SBI5-09R	SBN5-09R
SBI5-10	SBI5-10R	SBN5-10R
SBI5-11	SBI5-11R	SBN5-11R
SBI5-12	SBI5-12R	SBN5-12R
SBI5-13	SBI5-13R	SBN5-13R
SBI5-14	SBI5-14R	SBN5-14R
SBI5-15	SBI5-15R	SBN5-15R
SBI5-16	SBI5-16R	SBN5-16R
SBI5-18	SBI5-18R	SBN5-18R
SBI5-20	SBI5-20R	SBN5-20R
SBI5-22	SBI5-22R	SBN5-22R
SBI5-24	SBI5-24R	SBN5-24R
SBI5-26	SBI5-26R	SBN5-26R
SBI5-29	SBI5-29R	SBN5-29R
SBI5-32	SBI5-32R	SBN5-32R
SBI5-36	SBI5-36R	SBN5-36R

**STAYBOLT SELECTION CHART**

MODEL	SBI PART NO.	SBN PART NO.
SBI5-02	SBI054810002	SBI054810002
SBI5-03	SBI054810003	SBI054810003
SBI5-04	SBI054810004	SBI054810004
SBI5-05	SBI054810005	SBI054810005
SBI5-06	SBI054810006	SBI054810006
SBI5-07	SBI054810007	SBI054810007
SBI5-08	SBI054810008	SBI054810008
SBI5-09	SBI054810009	SBI054810009
SBI5-10	SBI054810010	SBI054810010
SBI5-11	SBI054810011	SBI054810011
SBI5-12	SBI054810012	SBI054810012
SBI5-13	SBI054810013	SBI054810013
SBI5-14	SBI054810014	SBI054810014
SBI5-15	SBI054810015	SBI054810015
SBI5-16	SBI054810016	SBI054810016
SBI5-18	SBI054810018	SBI054810018
SBI5-20	SBI054810020	SBI054810020
SBI5-22	SBI054810022	SBI054810022
SBI5-24	SBI054810024	SBI054810024
SBI5-26	SBI054810026	SBI054810026
SBI5-29	SBI054810029	SBI054810029
SBI5-32	SBI054810032	SBI054810032
SBI5-36	SBI054810036	SBI054810036