

U5 KS

DRAINAGE PUMP

- Cooling jacket for motor housing
- Low level pumping by detachable strainer base
- Flushing device
- Variable discharge branch with closable ventilation
- Run dry protection
- 10/20 mm free passage with EIP technology
- Moisture sealed cable inlet
- Fluid temperature 35 °C



DESCRIPTION

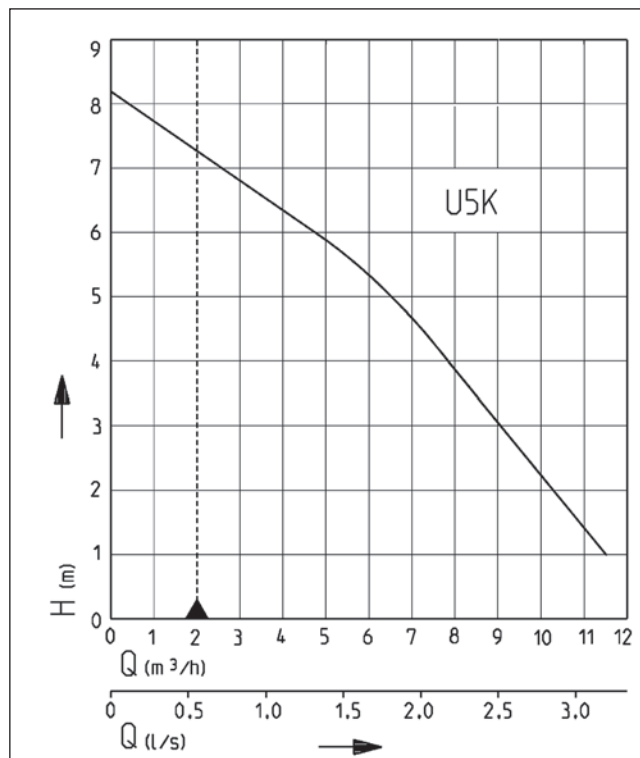
The U5 KS is an extremely powerful and versatile centrifugal submersible pump for both stationary and portable use. The pump is suitable for faecal-free wastewater with solids up to 10 mm particle size. Thanks to the removable strainer base, it is possible to increase the free passage to 20 mm.

Stationary in a basement chamber or a collecting tank, with an automatic switch attached, the U5 KS handles all dirty water arising from domestic drainage sources such as washing machines, dishwashers, washstands, etc. Deposit accumulation in the reservoirs and chambers is reduced to a minimum by means of a flushing device.

Guide rail systems offer the advantages of quick and easy maintenance. If the sump or tank runs dry temporarily, the pump is vented via an opening in the discharge elbow.

The U5 KS can be used as a portable unit for dealing with dirty water from garden ponds, flooded cellars or discharge chambers in laundry rooms or storage rooms. Thanks to its shallow, built-in suction system, it can reduce residual water level to no more than a few millimeters.

PERFORMANCE



Type	Delivery head H [m]	1	2	3	4	5	6	7
U5 KS	Flow rate Q [m³/h]	11.5	10.5	9.0	7.5	6.5	4.5	2.5

Specifications can be changed without notice. Performance subject to ISO 9906 tolerances.
This data is represented in the performance curve as a limit of application.

U5 KS

DRAINAGE PUMP

SCOPE OF SUPPLY

Pump ready for connection with 90° 1¼" female connection elbow, cable and safety plug, swing-type check valve for mobile use, and with automatic level float switch. The pump is delivered fitted with a strainer base which can be swapped for any of the accompanying pedestals in cases where a 20 mm clear passage is required.

MECHANICAL DATA

Pump	Vertical single-stage	Run dry protection	Yes
Free passage	20 mm	Shaft	Stainless steel
Bearing	Ball bearings, grease-lubricated	Impeller	Vortex impeller, GFK
Seal on motor side	Rotary shaft seal	Motor housing	Stainless steel
Oil chamber	Yes	Pump housing	GRP
Seal on medium side	2-fold rotary shaft seals	Submersible	Yes
		Pressure outlet	1 1/4" MI

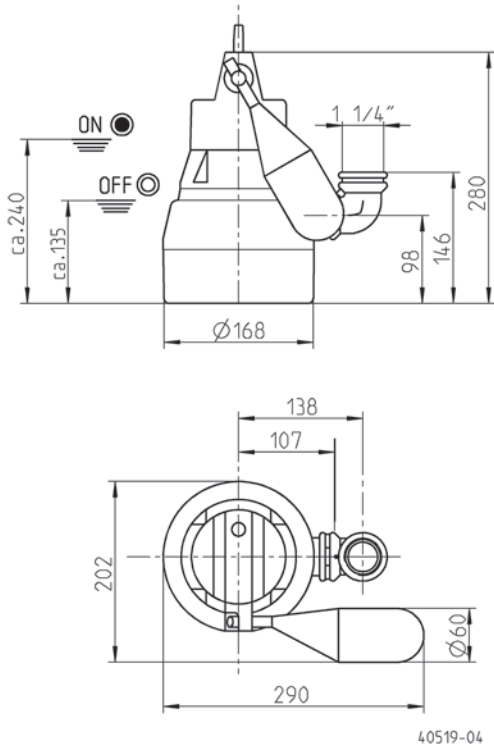
ELECTRICAL DATA

Voltage	1/N/PE~230 V	Insulation class	B
Motor rating P1	0.52 kW	Winding thermostat	Yes
Motor rating P2	0.38 kW	Motor protection	Integrated
Current	2.3 A	Plug	3 flat-pin ANZ
Type of enclosure	IP 68		

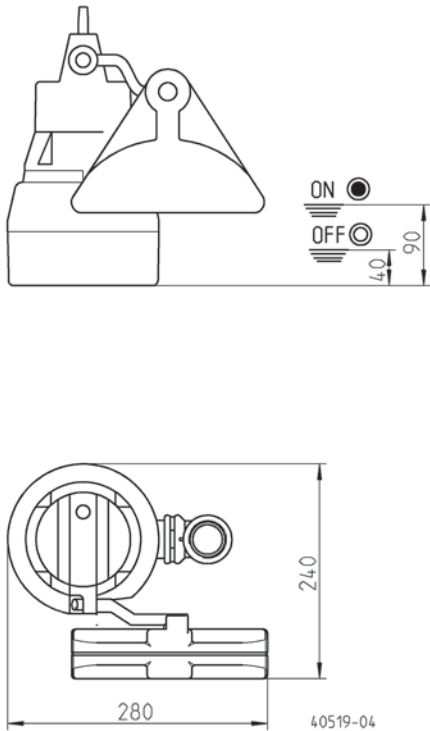
U5

Type	Code No.	Power line	Wires	Weight
With built-in level control				
U5KS, 10 m cable	JP44091	10m H07RN-F	3G1,0	5.4 kg

Dimensions and switching points U5 KS (mm)



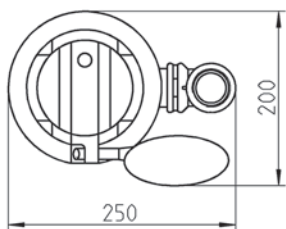
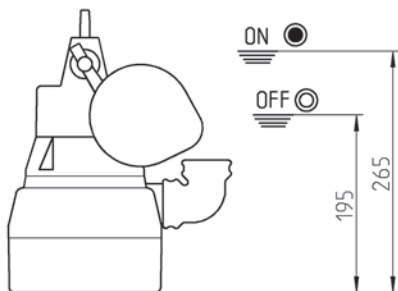
Dimensions and switching points special float switch (mm)



U5 KS

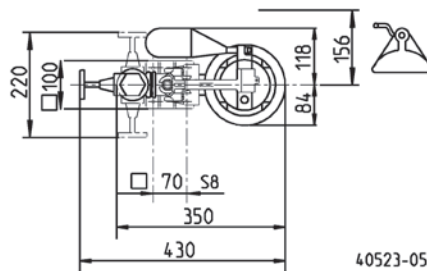
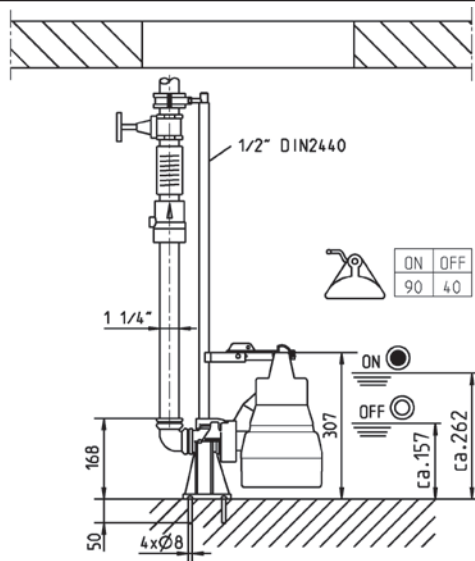
DRAINAGE PUMP

Dimensions and switching points float switch (mm)



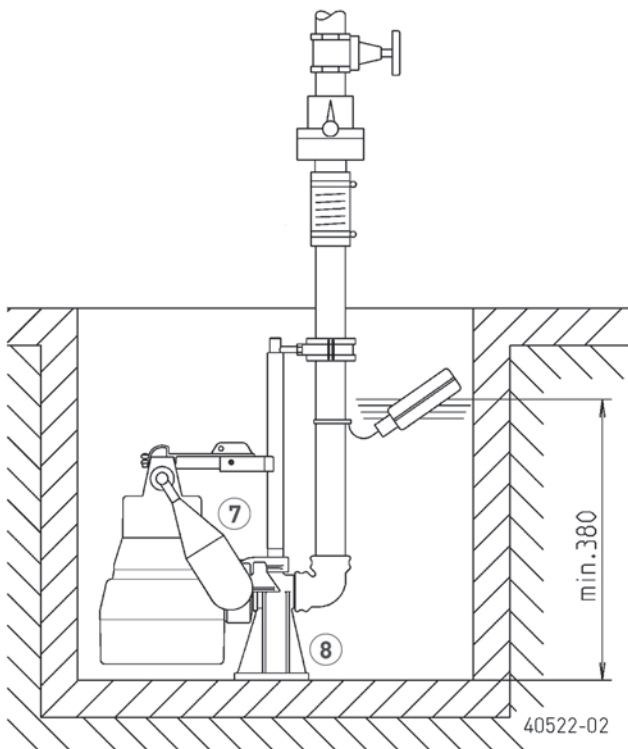
40519-04

Dimensions and switching points GR 32 (mm)



40523-05

Example of single pump installation with GR




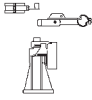


Single unit with GR: sump area min. 40x50 cm or Ø 50 cm
Single unit without GR: sump area min. 40x40 cm or Ø 40 cm

U5 KS

DRAINAGE PUMP

MECHANICAL ACCESSORY

			Code No.
	⑦ Special float	for lower switching points (U5 and U6)	JP44207
		for narrow chambers (mind. 30x30 od Ø30 cm)	JP40856
	Float fixation	for continuous pump operation	JP42175
	⑧ Guide rail system	GR 32	JP44000