

SIMER

SUBMERSIBLE UTILITY PUMP

(2mm Residual Water Level)

The Pentair Jung Pumpen Simer drainage pump is ideal for the disposal of faecal-free waste water, including rainwater and lightly polluted water.



KEY FEATURES

- Removes water down to a level of 2 mm
- Robust cast aluminium housing
- Manual pump - self-venting - operable at a water level of 5 mm
- Replaceable cable inlet
- Max head: 6 m
- Max flow : 70 lpm

APPLICATIONS & OPERATING CONDITIONS

Drainage pump for the disposal of faecal free waste water, including rainwater and lightly polluted water.

Ideal for moving water from:

- Cellars, basement
- Swimming pools
- Rooftops prone to rainwater flooding
- Wastewater from building works

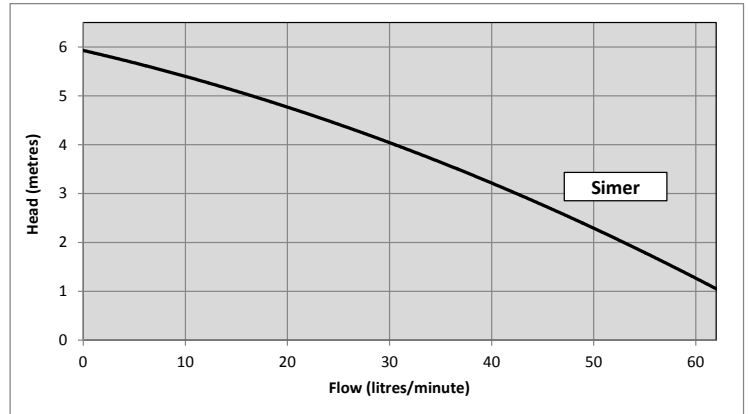
PUMP CONSTRUCTION MATERIALS

Vertical, single-stage, submersible, strainer with 2 mm mesh, spiral casing with hose connections of 1/2", 3/4" and 1". Hydraulics driven by dual blade open impeller.

Pump casing:	Aluminium - stove enamelled
Impeller:	Die cast zinc
Strainer:	Plastic
Seal:	Mechanical seal

PERFORMANCE

Type	P/No	Delivery head [m]	1	2	3	4	5
Simer 5	OD6601AU-05	Flow rate [lpm]	62	53	44	30	16
Simer 5 with float	Simer-A						



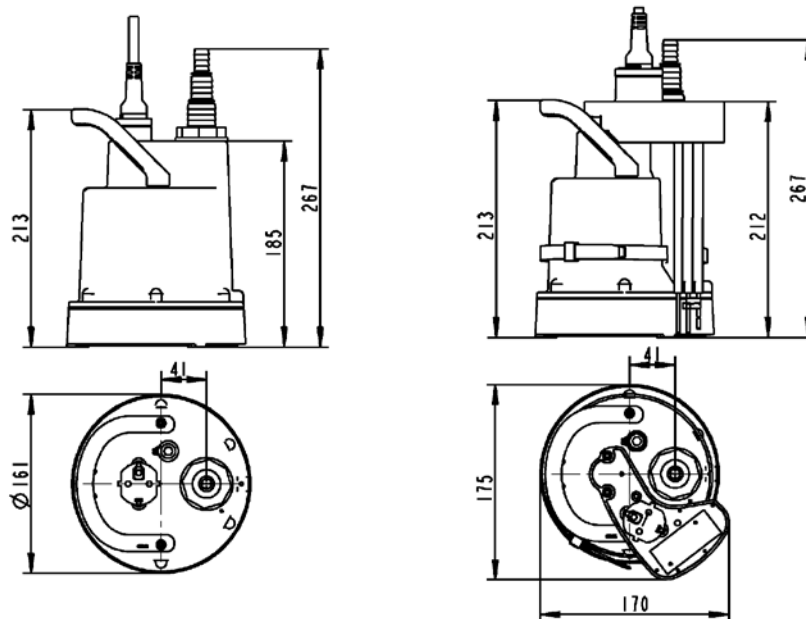
ELECTRICAL DATA

Type	Part Number	Type of current	Voltage ±10%	Frequency Hz	Motor rating kW	RPM min	Current ampere	Motor protection	Insulation class	IP Rating
					P1					
Simer 5	OD6601AU-05	1-phase	230	50	0.40	2100	2.6 A	Integrated	B	68
Simer 5 with float	Simer-A									

DIMENSIONS

Type	Maximum Height x diameter	Discharge	Hose connections	Cable quality	Cable length	Weight approx.
Simer 5	267 x 161 mm	1/4" BSP (female)	1/2", 3/4" and 1"	H07RN-F	10 m	5.0 kg
Simer 5 with float	267 x 175 mm					7.0 kg

DIMENSIONAL DRAWING



1-21 Monash Drive | Dandenong South, VIC 3175 | Australia | 1300 137 344 | pentair.com.au

Information contained here-in remains the property of Pentair under Australian copyright law. Content may not be reproduced or transmitted without our prior written permission.

Disclaimer: Pentair reserves the right to change product specifications and products details. Product images are for reference purposes only and may not represent the actual/current product.

©2022 Pentair. All rights reserved.

APPLICATIONS & OPERATING CONDITIONS

Drainage pump for the disposal of faecal free waste water, including rainwater and lightly polluted water.

Ideal for moving water from:

- Cellars, basement
- Swimming pools
- Rooftops prone to rainwater flooding
- Wastewater from building works

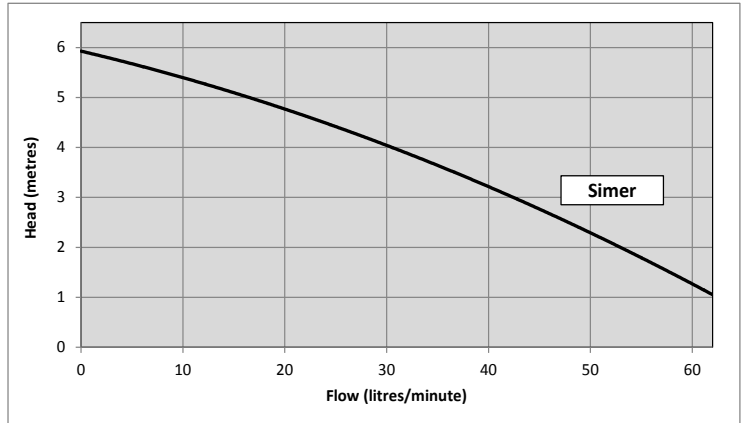
PUMP CONSTRUCTION MATERIALS

Vertical, single-stage, submersible, strainer with 2 mm mesh, spiral casing with hose connections of 1/2", 3/4" and 1". Hydraulics driven by dual blade open impeller.

- Pump casing:** Aluminium - stove enamelled
- Impeller:** Die-cast zinc
- Strainer:** Plastic
- Seal:** Mechanical seal.

PERFORMANCE

Type	P/No	Delivery head [m]	1	2	3	4	5
Simer	OD6601AU-04	Flow rate [lpm]	62	53	44	30	16



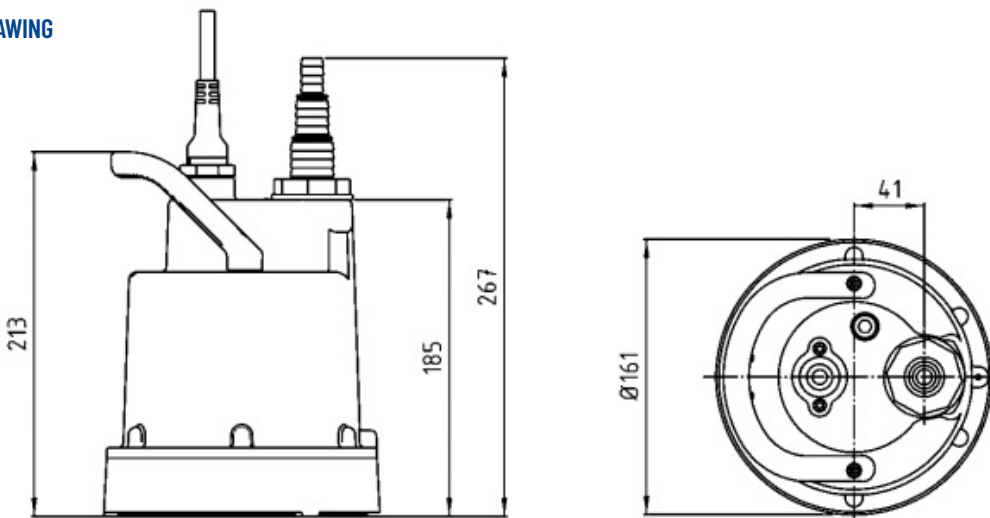
ELECTRICAL DATA

Type	Type of current	Voltage ±10%	Frequency Hz	Motor rating kW	RPM min	Current ampere	Motor protection	Insulation class	IP Rating
				P1					
Simer	1-phase	230	50	0.40	2100	2.6 A	Integrated	B	68

DIMENSIONS

Type	Maximum Height x diameter	Discharge	Hose connections	Cable quality	Cable length	Weight approx.
Simer	267 x 161 mm	1/4" BSP (female)	1/2", 3/4" and 1"	H07RN-F	10 m	5.0 kg

DIMENSIONAL DRAWING



1-21 Monash Drive | Dandenong South, VIC 3175 | Australia | 1300 137 344 | pentair.com.au

Information contained here-in remains the property of Pentair under Australian copyright law. Content may not be reproduced or transmitted without our prior written permission.

Disclaimer: Pentair reserves the right to change product specifications and products details. Product images are for reference purposes only and may not represent the actual/current product.

©2022 Pentair. All rights reserved.

SIMER

SUBMERSIBLE UTILITY PUMP

(2mm Residual Water Level)

The Pentair Jung Pumpen Simer drainage pump is ideal for the disposal of faecal-free waste water, including rainwater and lightly polluted water.



KEY FEATURES

- Removes water down to a level of 2 mm
- Robust cast aluminium housing
- Manual pump - self-venting - operatable at a water level of 5 mm
- Replaceable cable inlet
- Max head: 6 m
- Max flow : 215 lpm

ELECTRICAL DATA

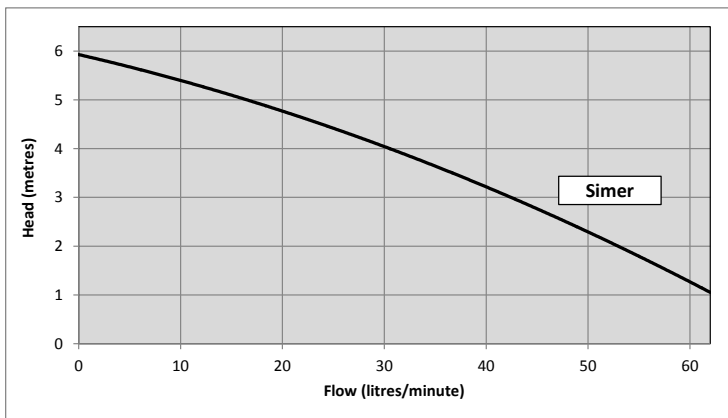
Type	Type of current	Voltage ±10%	Frequency Hz	Motor rating kW	RPM min	Current ampere	Motor protection	Insulation class	IP Rating
				P1					
Simer	1-phase	230	50	0.40	2100	2.6 A	Integrated	B	68

DIMENSIONS

Type	Maximum Height x diameter	Discharge	Hose connections	Cable quality	Cable length	Weight approx.
Simer	267 x 161 mm	1/4" BSP (female)	1/2", 3/4" and 1"	H07RN-F	10 m	5.0 kg

PERFORMANCE

Type	P/No	Delivery head [m]	1	2	3	4	5
Simer	OD6601AU-04	Flow rate [lpm]	62	53	44	30	16



APPLICATIONS & OPERATING CONDITIONS

Drainage pump for the disposal of faecal free waste water, including rainwater and lightly polluted water.

Ideal for moving water from:

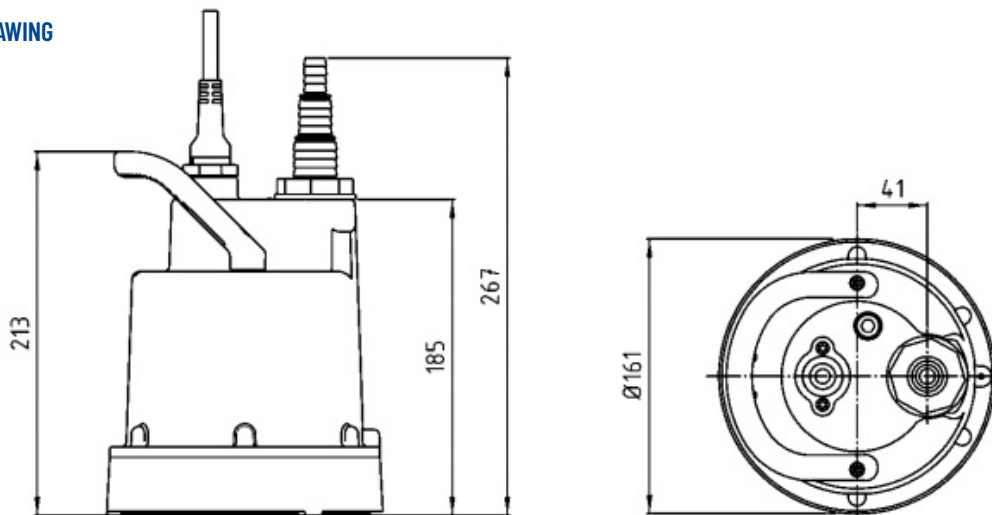
- Cellars, basement
- Swimming pools
- Rooftops prone to rainwater flooding
- Wastewater from building works

PUMP CONSTRUCTION MATERIALS

Vertical, single-stage, submersible, strainer with 2 mm mesh, spiral casing with hose connections of 1/2", 3/4" and 1". Hydraulics driven by dual blade open impeller.

Pump casing:	Aluminium - stove enamelled
Impeller:	Die cast zinc
Strainer:	Plastic
Seal:	Mechanical seal.

DIMENSIONAL DRAWING



1-21 Monash Drive | Dandenong South, VIC 3175 | Australia | 1300 137 344 | pentair.com.au

Information contained here-in remains the property of Pentair under Australian copyright law. Content may not be reproduced or transmitted without our prior written permission.

Disclaimer: Pentair reserves the right to change product specifications and products details. Product images are for reference purposes only and may not represent the actual/current product.

©2022 Pentair. All rights reserved.

APPLICATIONS & OPERATING CONDITIONS

Drainage pump for the disposal of faecal free waste water, including rainwater and lightly polluted water.

Ideal for moving water from:

- Cellars, basement
- Swimming pools
- Rooftops prone to rainwater flooding
- Wastewater from building works

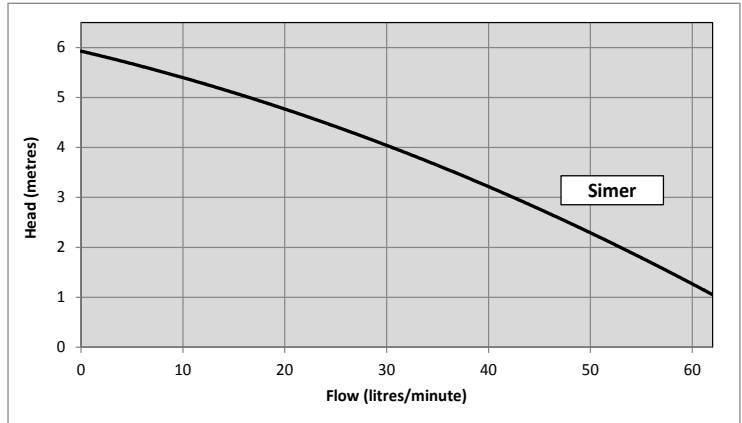
PUMP CONSTRUCTION MATERIALS

Vertical, single-stage, submersible, strainer with 2 mm mesh, spiral casing with hose connections of 1/2", 3/4" and 1". Hydraulics driven by dual blade open impeller.

- Pump casing:** Aluminium - stove enamelled
- Impeller:** Die-cast zinc
- Strainer:** Plastic
- Seal:** Mechanical seal.

PERFORMANCE

Type	P/No	Delivery head [m]	1	2	3	4	5
Simer	OD6601AU-04	Flow rate [lpm]	62	53	44	30	16



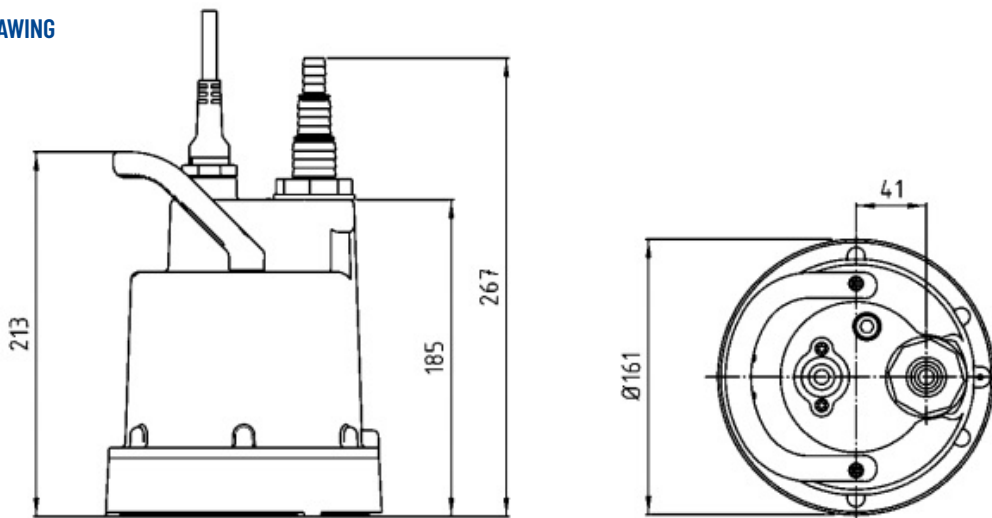
ELECTRICAL DATA

Type	Type of current	Voltage ±10%	Frequency Hz	Motor rating kW	RPM min	Current ampere	Motor protection	Insulation class	IP Rating
				P1					
Simer	1-phase	230	50	0.40	2100	2.6 A	Integrated	B	68

DIMENSIONS

Type	Maximum Height x diameter	Discharge	Hose connections	Cable quality	Cable length	Weight approx.
Simer	267 x 161 mm	1/4" BSP (female)	1/2", 3/4" and 1"	H07RN-F	10 m	5.0 kg

DIMENSIONAL DRAWING



1-21 Monash Drive | Dandenong South, VIC 3175 | Australia | 1300 137 344 | pentair.com.au

Information contained here-in remains the property of Pentair under Australian copyright law. Content may not be reproduced or transmitted without our prior written permission.

Disclaimer: Pentair reserves the right to change product specifications and products details. Product images are for reference purposes only and may not represent the actual/current product.

©2022 Pentair. All rights reserved.

ELECTRICAL DATA

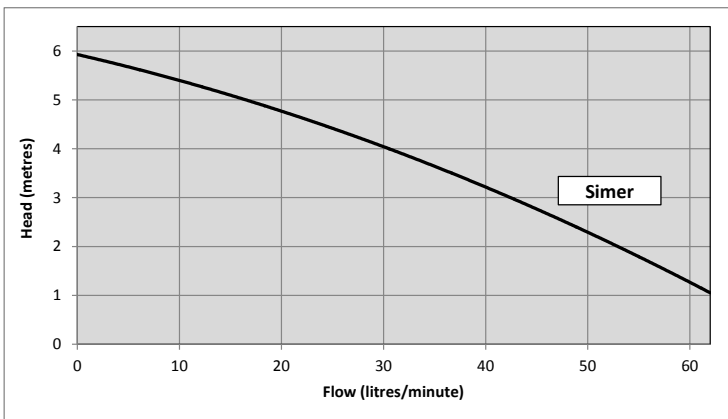
Type	Part Number	Type of current	Voltage $\pm 10\%$	Frequency Hz	Motor rating kW	RPM min	Current ampere	Motor protection	Insulation class	IP Rating
					P1					
Simer 5	OD6601AU-05	1-phase	230	50	0.40	2100	2.6 A	Integrated	B	68
Simer 5 with float	Simer-A									

DIMENSIONS

Type	Maximum Height x diameter	Discharge	Hose connections	Cable quality	Cable length	Weight approx.
Simer	267 x 161 mm	1/4" BSP (female)	1/2", 3/4" and 1"	H07RN-F	10 m	5.0 kg
Simer 5 with float	267 x 175 mm					7.0 kg

PERFORMANCE

Type	P/No	Delivery head [m]	1	2	3	4	5
Simer	OD6601AU-05	Flow rate [lpm]	62	53	44	30	16
Simer 5 with float	Simer-A						



APPLICATIONS & OPERATING CONDITIONS

Drainage pump for the disposal of faecal free waste water, including rainwater and lightly polluted water.

Ideal for moving water from:

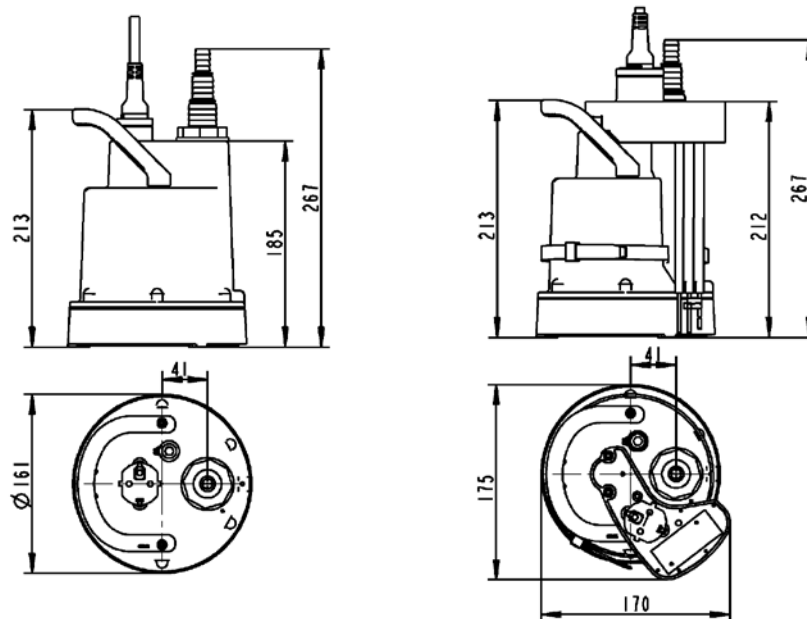
- Cellars, basement
- Swimming pools
- Rooftops prone to rainwater flooding
- Wastewater from building works

PUMP CONSTRUCTION MATERIALS

Vertical, single-stage, submersible, strainer with 2 mm mesh, spiral casing with hose connections of 1/2", 3/4" and 1". Hydraulics driven by dual blade open impeller.

Pump casing:	Aluminium - stove enamelled
Impeller:	Die cast zinc
Strainer:	Plastic
Seal:	Mechanical seal.

DIMENSIONAL DRAWING



1-21 Monash Drive | Dandenong South, VIC 3175 | Australia | 1300 137 344 | pentair.com.au

Information contained here-in remains the property of Pentair under Australian copyright law. Content may not be reproduced or transmitted without our prior written permission.

Disclaimer: Pentair reserves the right to change product specifications and products details. Product images are for reference purposes only and may not represent the actual/current product.

©2022 Pentair. All rights reserved.