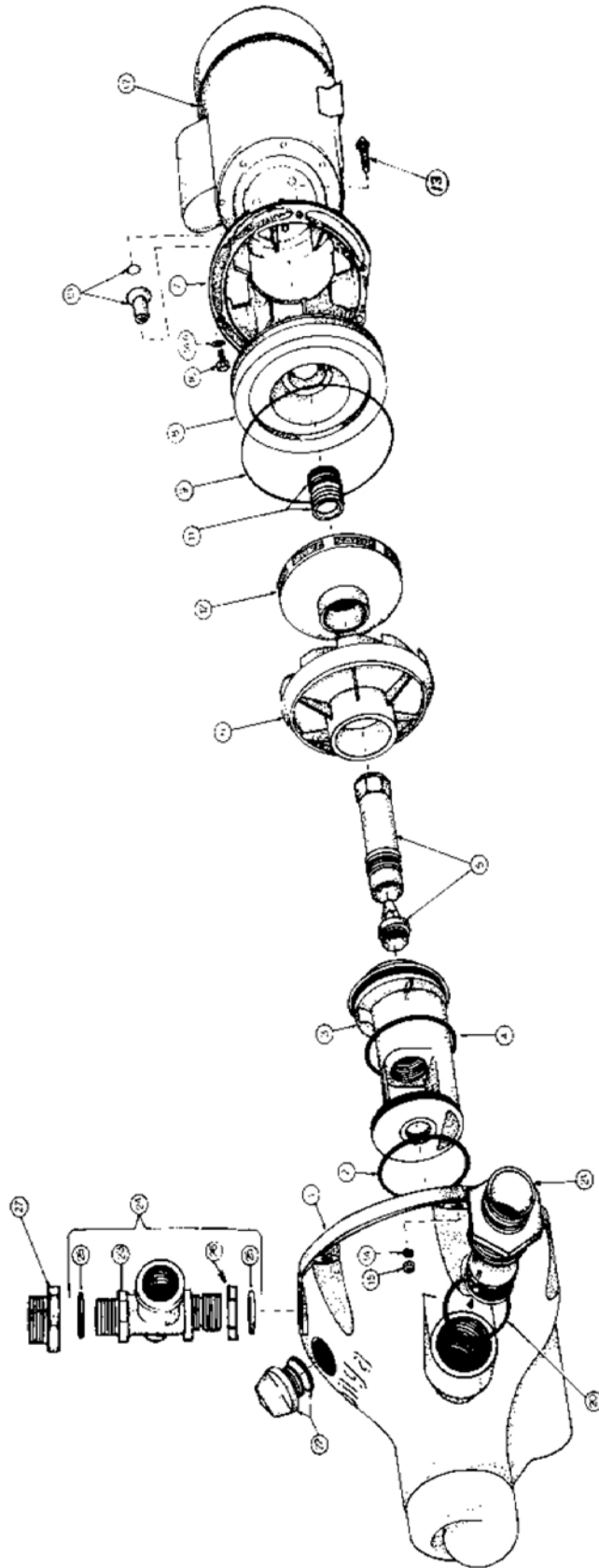


Model 543



Drawings are indicative only, product appearance may change slightly.

PARTS LIST TABLE

| | |
|--------------------|---------------|
| MODEL | 543 |
| PART NUMBER | 354300 |

| REF NO. | COMPONENT DESCRIPTION | PART NO. | |
|---------|------------------------------------|----------|-----|
| 1 | Casing | 301190 | 1PC |
| 2 | O'ring - Injector Housing (Front) | 702185K | 1PC |
| 3 | Housing - Injector | 301200 | 1PC |
| 4 | O'ring - Injector Housing (Rear) | 700204K | 1PC |
| 5 | Jet & Venturi | 801152 | 1PC |
| 6 | Diffuser | 402810K | 1PC |
| 7 | Yoke | 301180 | 1PC |
| 8 | Baffle | 402301K | 1PC |
| 9 | O'ring - Casing | 702184K | 1PC |
| 10 | Shaft Sleeve & O'ring | 800895K | 1PC |
| 10b | O'ring - Shaft Sleeve (Pack of 10) | 702218K | 1PC |
| 11 | Seal Kit | 800583 | 1PC |
| | Seal (Pack of 25) | 800900 | 1PC |
| 12 | Impeller | 506333K | 1PC |
| 13 | Coach Bolt (Set of 10) | 800254 | 6PC |
| 14 | Washer (Set of 20) | 800151 | 6PC |
| 15 | Nut (Set of 12) | 702025K | 6PC |
| 16 | Screw (Set of 10) | 800098 | 4PC |
| 17 | Motor - 1PH | 800445 | 1PC |
| 18 | Base & Screws Kit | NLA | 1PC |
| 19 | Screw (Set of 10) | NLA | 2PC |
| 20 | O'ring (Pack of 5) | 702182K | 1PC |
| 21 | Nipple & Clacker Assy | 800296K | 1PC |
| 22 | Priming Plug & O'ring | 800017K | 1PC |
| 23 | Tee - Threaded Discharge | NLA | 1PC |
| 24 | Tee Assembled - Threaded Dis. | 800277 | 1PC |